

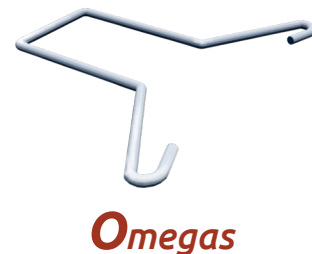
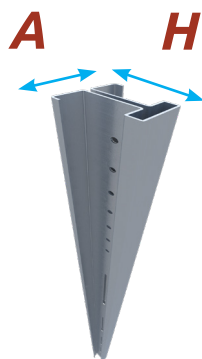
structural post

Geopost[®]

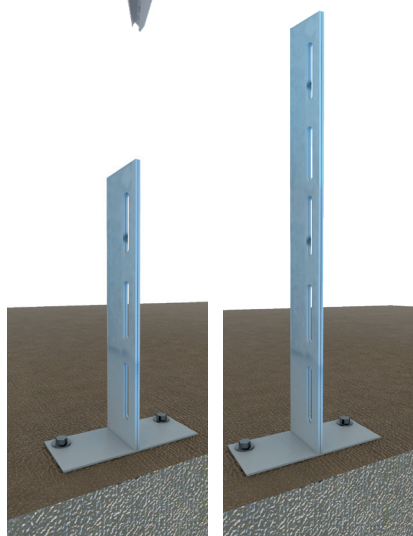
Structural posts made from 2 mm galvanized steel sheeting that are fitted between floor structures to increase the rigidity of the brickwork.

They consist of three parts, two ends and a central part formed by a folded sheet where the **Geoanc[®]** series omegas are housed to join the brickwork to the post. This joint permits differential movement between the wall and the structure.

The telescopic design of these posts means that can be fitted without any welding, and compensate for any irregularities in the floor structures.



Omegas



Ends